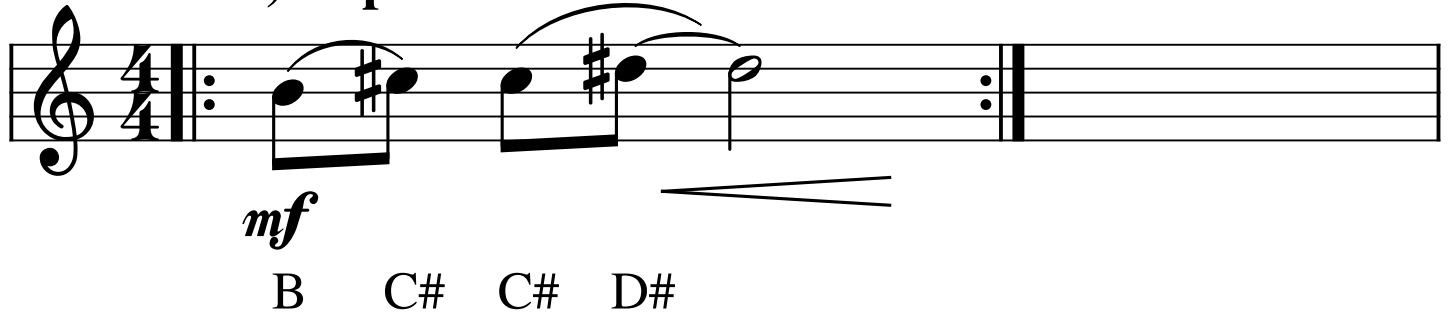


# Clime Climb Set 1

## Flutes or Single Line Instruments in C

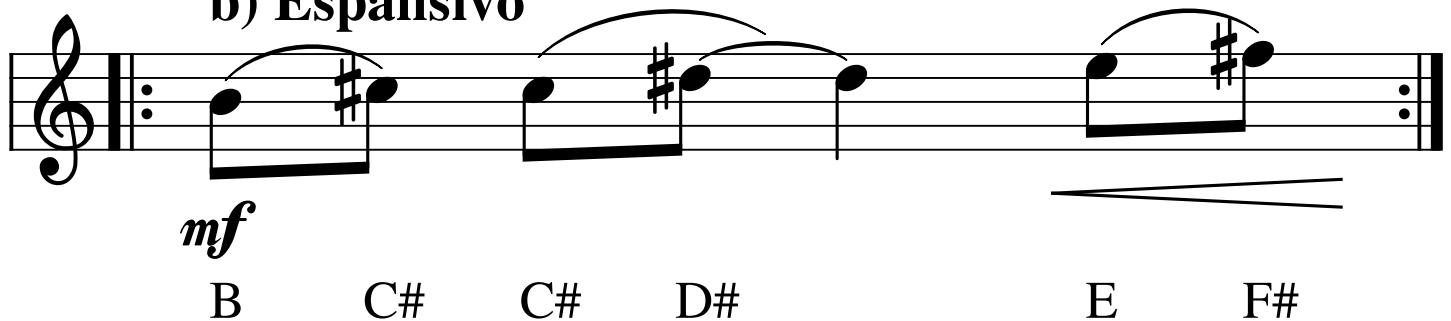
### a) Espansivo



Musical notation for exercise a) Espansivo. It is written on a single staff in treble clef with a 4/4 time signature. The piece begins with a repeat sign. The melody consists of four notes: B, C#, C#, and D#. The first two notes are beamed together, and the last two are also beamed together. A slur covers the entire phrase. A dynamic marking of *mf* is placed below the first note. A hairpin crescendo symbol is positioned below the notes C# and D#.

*mf*  
B C# C# D#

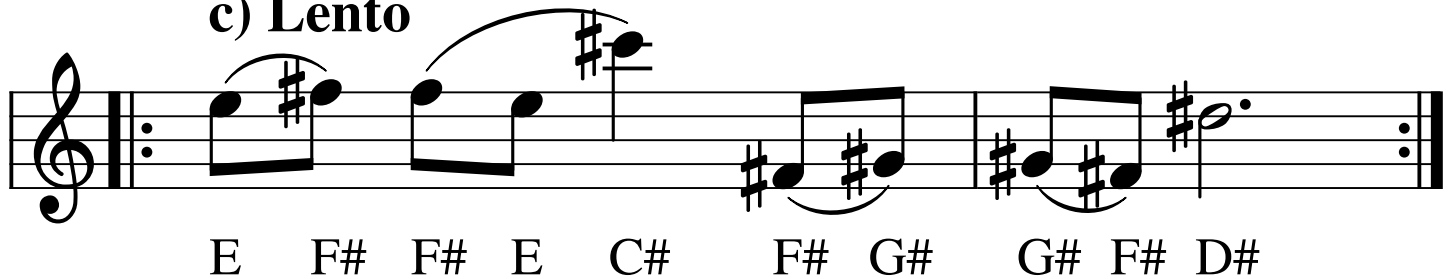
### b) Espansivo



Musical notation for exercise b) Espansivo. It is written on a single staff in treble clef. The piece begins with a repeat sign. The melody consists of seven notes: B, C#, C#, D#, E, and F#. The first four notes are beamed together, and the last two are also beamed together. A slur covers the entire phrase. A dynamic marking of *mf* is placed below the first note. A hairpin crescendo symbol is positioned below the notes E and F#.

*mf*  
B C# C# D# E F#

### c) Lento



Musical notation for exercise c) Lento. It is written on a single staff in treble clef. The piece begins with a repeat sign. The melody consists of ten notes: E, F#, F#, E, C#, F#, G#, G#, F#, and D#. The first four notes are beamed together, and the last six notes are beamed together. A slur covers the entire phrase. The notes F#, G#, G#, F#, and D# are marked with a fermata.

E F# F# E C# F# G# G# F# D#

*poco f*

*poco p*

*What can I really do?*

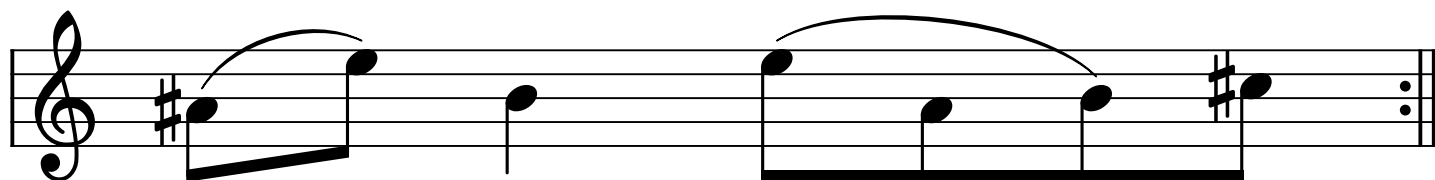
**d) Andante**



C# D# D# A E G# A#

*p, espr.*

*I listened to the calls of the birds.*



A# E B E A B C#

e) Quietly insistent



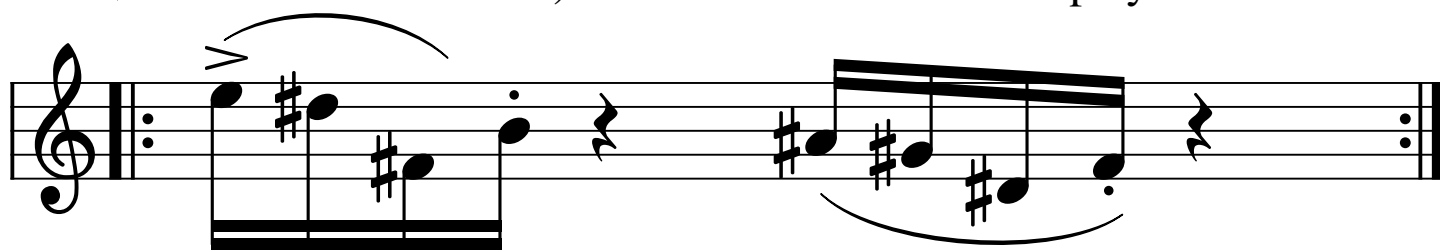
*mp*

G# B G# A B<sup>b</sup> C B C# D# D E D

*In the dark I slept in my bed; the noise of the metro...*

f) Scherzando

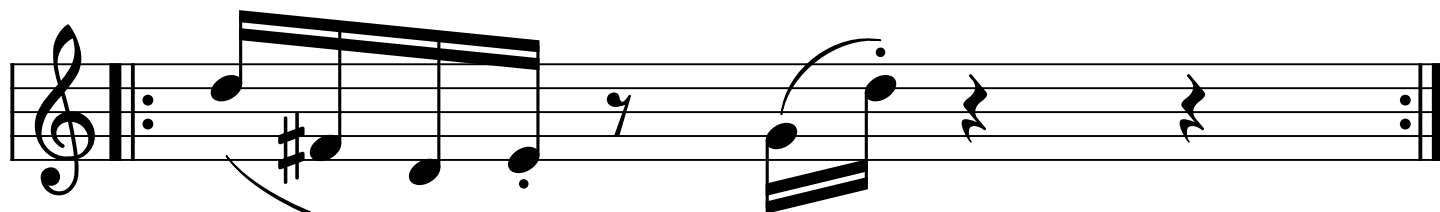
f) choose either measure or play both



*mf*

E D# F# B

A# G# D# F#



*mp*

D F# D E

G D

*Waiting for a train*

# Clime Climb Set 4

## Metallophones

### e) Forthright

Musical notation for 'e) Forthright' in treble clef. The piece starts with a repeat sign. The first measure contains a quarter note B (marked *f* and *>*), a quarter note E (marked *>*), and a quarter note B<sup>b</sup> (marked *>*). The second measure contains a quarter note B (marked *mp*), a quarter note E, a quarter note B<sup>b</sup>, a quarter note A, a quarter note G, a quarter note D, and a quarter note G. A slur covers the notes B, E, B<sup>b</sup>, A, G, D, G in the second measure. The piece ends with a repeat sign.

*f* *mp*

B E B<sup>b</sup> B E B<sup>b</sup> A G D G

### f) Misterioso

Musical notation for 'f) Misterioso' in treble clef. The piece starts with a repeat sign. The first measure contains a quarter note E<sup>b</sup>, a quarter note G<sup>b</sup>, and a half note C. The second measure contains a quarter note E<sup>b</sup>, a quarter note G<sup>b</sup>, and a half note D. The third measure contains a quarter note E<sup>b</sup>, a quarter note G<sup>b</sup>, a quarter note C, and a quarter note B<sup>b</sup>. Slurs are placed over the first two measures and the last two notes of the third measure. The piece ends with a repeat sign.

*p*

E<sup>b</sup> G<sup>b</sup> C E<sup>b</sup> G<sup>b</sup> D E<sup>b</sup> G<sup>b</sup> C B<sup>b</sup>

*Waiting for a train which wouldn't come nor go*

### g) Gently

Musical notation for 'g) Gently' in treble clef. The piece starts with a repeat sign. The first measure contains a quarter note B and a dotted half note C#. The second measure contains a quarter note D, a quarter note B<sup>b</sup>, and a quarter note D. The third measure contains a quarter note D, a quarter note B, a quarter note E, a quarter note B<sup>b</sup>, and a quarter note B. Slurs are placed over the first two notes of the first measure and the first four notes of the third measure. The piece ends with a repeat sign.

B C# D B<sup>b</sup> D D B E B<sup>b</sup> B

*molto p*

# Clime Climb Set 5

## Keyboards

### a) Gently

Musical score for 'a) Gently' in 4/4 time. The piece is marked *mp* (mezzo-piano). The melody in the right hand consists of a quarter note C# (F#4), a quarter note D# (F#5), a half note D# (F#5), and a half note E (G5). The bass line in the left hand consists of a quarter note C# (F#3), a quarter note D# (F#4), a half note D# (F#4), and a half note E (G4). The notes are indicated by letter names with sharps: C#, D#, D#, A, E.

### b) Sharp

Musical score for 'b) Sharp' in 4/4 time. The piece is marked *f* (forte). The melody in the right hand consists of a quarter note C (C4), a quarter note B (B3), and a half note B (B3). The bass line in the left hand consists of a quarter note C (C3), a quarter note B (B2), and a half note B (B2). The notes are indicated by letter names: C, B, C, B.

**c) Gently**

Musical notation for exercise c) Gently. It consists of two staves, treble and bass clef, with a grand staff brace on the left. The melody is written in treble clef and the bass line in bass clef. The key signature has one sharp (F#). The tempo/mood is 'Gently'. The dynamics are marked 'p' (piano). The notes are: Treble clef: E4 (quarter), G4 (quarter), F#4 (half). Bass clef: E3 (quarter), G3 (quarter), F#3 (half). A slur covers the first two notes of both staves. A fermata is placed over the F# notes in both staves.

*p*  
E

G

F#

A diagram showing a horizontal line with three notes: E, G, and F#. A bracket spans from E to G, and another bracket spans from G to F#. A fermata symbol is placed above the F# note.

*in the dark I sleep*

**d) Somewhat fleet**

Musical notation for exercise d) Somewhat fleet. It consists of two staves, treble and bass clef, with a grand staff brace on the left. The melody is written in treble clef and the bass line in bass clef. The key signature has one sharp (D#). The tempo/mood is 'Somewhat fleet'. The dynamics are marked 'mp' (mezzo-piano). The notes are: Treble clef: D#4 (quarter), A4 (quarter), A4 (quarter), Bb4 (quarter), C4 (half). Bass clef: D#3 (quarter), A3 (quarter), A3 (quarter), Bb3 (quarter), A3 (half). A slur covers the first two notes of both staves. A fermata is placed over the Bb notes in both staves.

*mp*  
D#

A

A

B<sup>b</sup>

C

A diagram showing a horizontal line with five notes: D#, A, A, Bb, and A. A bracket spans from D# to the first A, another bracket spans from the second A to Bb, and a third bracket spans from Bb to the final A. A fermata symbol is placed above the Bb note.

e) Brittle

The image shows a musical score for a piano piece titled "e) Brittle". It consists of two staves, both in treble clef. The key signature has one sharp (F#), and the time signature is 3/4. The score is marked with a repeat sign at the beginning and end. The notes are as follows:

Staff	Measure 1	Measure 2	Measure 3	Measure 4	Measure 5
Upper Staff	D# (quarter)	A (quarter)	A (quarter)	Rest	E (quarter)
Lower Staff	Rest	D# (quarter)	A (quarter)	A (quarter)	E (quarter)

Below the notes, the letters "D#", "A", "D#", "A", "E" are printed, corresponding to the notes in the lower staff. Above the notes in the upper staff, the letters "D#", "A", "E" are printed. The final measure of the upper staff has a fermata over the E note.

*What can I really do?*